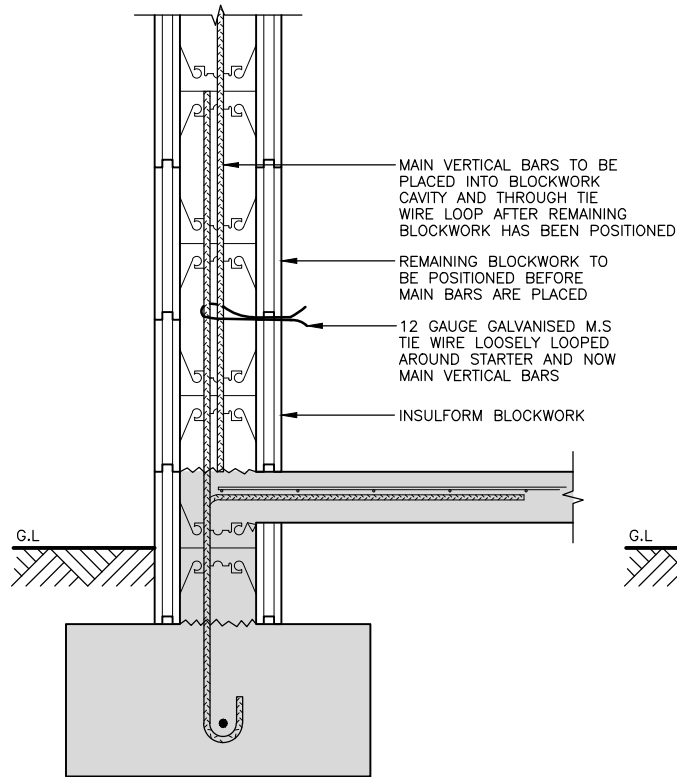
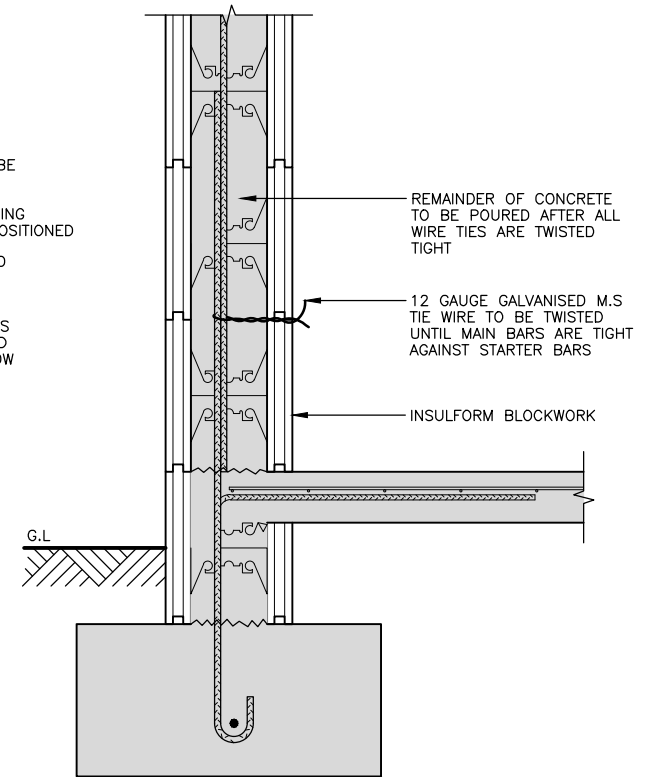


STEP 1



STEP 2



STEP 3

**DETAIL A (16/12/96)**

NOTE :

FOR DPM AND OTHER FOUNDATION DETAILS REFER TO SH03

D	14-4-09	METAL BRIDGE CHANGED TO THERMOPLASTIC BRIDGE	W.L.	CGF			
	DATE	DESCRIPTION	ENG	DRN	EN.CK	DN.CK	APP.

© 2009 FILE:[PG46\_2\_revD] - 14-APRIL-2009 >VERSION 6<

**INSULFORM NZ**  
CHRISTCHURCH, NZ.  
E.P.S. THERMOPLASTIC BRIDGE BLOCK  
CONTINUOUS REINFORCED CONCRETE  
WALL SYSTEMS. PAT.NO.247577

Phone: 384 3804  
Fax: 384 0009

**STRUCTURAL ENGINEERS**  
Y LEWIS & BARROW LTD  
PH 366 4320 CHRISTCHURCH

**TYPICAL WIRE TIE  
DETAIL**

ENG	W.L.	FILE	DRAWING
DRN	B.T	6157	2
CHK	W.L.		
DATE	5/94		